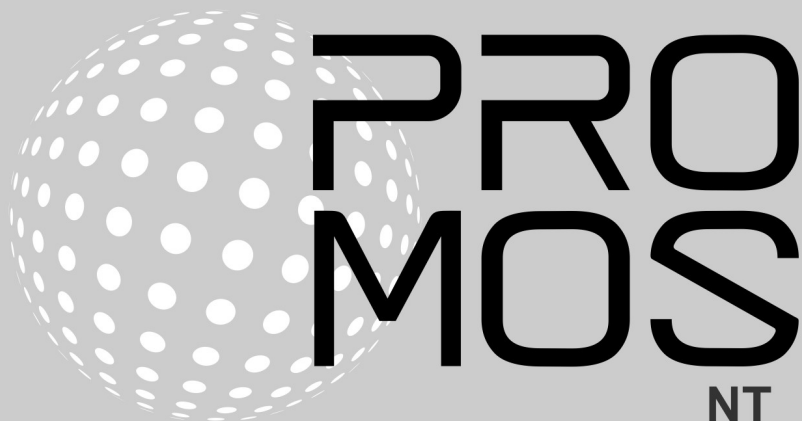


Update



# Contents

1	Introduction	3
2	Corrections	3
2.1	Version 2.1.110.1 .....	3
2.2	Version 2.1.109.5 .....	4
2.3	Version 2.1.109.4 .....	6
3	Important changes and new functions	8
3.1	Display licenses extended .....	8
3.2	Extension Delimiter.cfg .....	8
3.3	GE - Graphic Editor .....	9
3.3.1	Display number of marked objects .....	9
3.3.2	Customization Copy/Paste function .....	9
3.4	MalmMng - remote alarm .....	9
3.5	pBackup / pRestore .....	9
3.6	PDBS .....	9
3.7	PET - ProMoS Engineering Tool .....	10
3.7.1	Filter for alarm bill assignment .....	10
3.7.2	Conversion trend data acquisition .....	10
3.7.3	Download template objects .....	11
3.8	pStop .....	12
3.9	General .....	12
3.9.1	DELIMITER.CFG extension .....	12
4	Windows 11	13
5	What's next for ProMoS?	13
6	Support	14

# 1 Introduction

In the following chapters corrections on the one hand and innovations and improvements on the other hand are described.

This description refers to version 2.1.110. Usually several versions are summarized, because intermediate versions are partly not published. This can have several reasons. For example not finished functions, which affect a work or simply not passed internal tests.

These descriptions are translated automatically (by machine). Therefore we would like to apologize for the inconvenience.

## 2 Corrections

In diesem Kapitel werden einzelne Korrekturen und Verbesserungen aufgeführt.

### 2.1 Version 2.1.110.1

Version from 18 August 2021

#### **AlmView**

- Portal socket format extended (#N, #O).
- Full screen mode in remote mode corrected.
- Acknowledgement option hidden (right mouse button menu) if too few permissions.

#### **BACDriver**

- Extension Scan BAC\_DEVICE under *System:Driver:BacDriver*.
- Network number can now be entered in the Recipient list.
- Enhancements Logs when inserting VLO/BMO.
- Extension Units (MicroSiemens).
- Number of user BACnet objects is stored new in DMS.

#### **DMS**

- Control function "AKS" no longer issues error message if second parameter is wrong (because effectively not present).
- Crash in connection with JSON query QUERY (memory leak).

#### **MailDriver**

- Correction text "Vattenfall Wärme".
- Ability to export data to SQLite database (for debug purposes).

#### **pBackup**

- Adjustment of historical data backup.

#### **pChart**

- Backup sometimes used the wrong file name.
- Automatic reconnection to DMS after an interruption (e.g. remote pChart).

#### **PDBS**

- Error when reading data at the beginning of the month.
- Reorganization of DAT directory optimized.
- Massive extension of automated tests (also in connection with a PDBS replacement).

- Sequence of data storage in \_past files adjusted (data storage for subsequent delivery of corrected consumption data).
- Reorganization of "old" projects revised so that data files from 20 years ago are also processed correctly.

**PET**

- When showing and hiding columns in the detail view, the column width was not taken over correctly.
- The automatic allocation of PCD resources works now also without installation of SAIA PG5.
- Adaptation BNT generator (is not yet finished, because the templates are still missing).

**PrtFormat**

- #O / #o for passing the DMS name (separators are not replaced by Delimiter.cfg).

**pRestore**

- Adjustments for restore of historical data.

**ProjectCfg**

- Correction when starting a project if another project is already running.

**PrtDumpWin**

- Improved performance of the utility for viewing dumped data.
- The timestamp display now includes milliseconds.

**pWebAccess**

- Correction for simultaneous position changes (X1, X2, Y1, Y1).

**Setup**

- Uninstall no longer brings a message that directories are not empty.
- The "Backup" directory in InstallDir\ is created automatically.
- Logos adjusted.

## 2.2 Version 2.1.109.5

Version from June 25, 2021

**AlmMng**

- Alarm history in DMS corrected.
- Selection of character set for forwarding alarms (Latin1 or UTF8)

**BACDriver**

- Possibility to run the driver as a server (for networks whose devices require a server).
- Reading of the Valuetype for WeeklySchedule and ExceptionSchedule.
- JSON/REST interface directly in BACDriver for WeeklyScheduler, ExceptionSchedule and Calendar.

**ClkMng**

- Customization of the trayicon.

**DMS**

- Data export error (1st line) fixed.
- JSON/REST extended by error handling (feedback also for faulty telegrams).
- System:Date:DateLong was not updated correctly.

- License MQTT driver was added.
- Authentication via JSON/REST implemented.

**GE**

- Eliminated several possible crashes (thanks for feedback via CrashReports).
- Copy/Paste of texts was only possible with up to 710 characters, now unlimited.
- Message on save about incorrectly initialized objects can be disabled (until next restart of GE).
- Several problems with macros with links fixed.
- Dialog "Input value" is always displayed in the foreground.
- Inheritance of images in images in macros corrected.

**MalmMng**

- Alarms are added to the DMS (again).
- Crashes fixed (multithread problems).
- Remote alarming is only activated when all data points are read in.

**pAlmText**

- Crash on exit corrected.

**pChart**

- Display at progress bar optimized.

**PDBS**

- Correction at log query.
- Reorganization is started only when directory is defined.
- No data storage of historical data in DAT directory.

**PET**

- Crash on import of wrongly formatted CSV files fixed.
- Possible crash at startup eliminated (occurred very rarely).
- Placeholder for BNT export extended.
- Help system display improved.
- If alarm images are assigned in PET, the display in AlmView is activated automatically.
- PG5 functions extended (only visible if PG5 is installed).
- Possibility created to generate code also for BACnet projects (PG5).

**pList**

- Progressbar no longer "steals" focus in multi-DMS environments.

**pmosfunc.dll**

- Write protection for projects disabled (slipped in with version 2.1.109.4).

**GE2XML / GE**

- Visibility of incorrectly initialized objects in the pWA restored because the effort to correct errors would be too great for the integrator.
- GE2XML no longer aborts on incorrect initializations.

**MBusDriver**

- Additional device support for ACW (Actaris (water and heat)).

**PCDDriver**

- Problem with BIT communication in register (bit 31) fixed.

**pWebAccess**

- keep-alive flag prevents closing of sessions. Correction for common browsers. Safari is not supported (has never been supported).
- Problems with requests over SSL (AlarmViewer). Connect/Disconnect.
- Protocol Viewer: Filter corrected.
- Font size corrected if no size specified.

**TwinCatAdsDriver**

- VLO's removed from setup.

## 2.3 Version 2.1.109.4

Version from 14 April 2021

**AlmView**

- In multi-DMS environments the alarm viewer is displayed as soon as the first connection with a DMS can be established. Older versions try to include all DMSes before the alarm list is displayed.
- Is no longer automatically minimized in multi-monitor environments.
- Crash during printing fixed.

**BACDriver**

- Missing data points in BMO - Device inserted [restore-preparation-time].
- Added JSON interface to query BACnet attributes (Weekly Scheduler, Exception Scheduler).

**DMS**

- AutoLogoff function rebuilt. Can now be set dynamically. Logoff time is stored in DMS under *System:User:AutoLogoffTimeout*.
- BMO update again deletes data points in inherited templates that are not present in BMO.

**GE**

- Check on save if data points exist in DMS can be disabled.
- Unnecessary queries whether image should be saved eliminated.
- Correction in position of link boxes, also in global macros.
- When inserting and reinitializing macros, the GE did not ask whether to save.
- Size of "Value input" dialog optimized.
- When canceling with ESC while connecting links, it happened that objects were also deleted.
- If an object in the library was "dragged" into the GE, whose configuration was not available, the GE could crash.
- Reinitializations of PAR\_IN, PAR\_OUT only in the current DMS tree.

**MailDriver**

- Ignoring of erroneous data in SimpleCSV format.
- Old date format (RFC822) implemented.

**pChart**

- Minimum and maximum values are displayed correctly when zooming.
- Timestamp corrected when zooming.
- Float data type replaced by double data type. Could cause problems with large counter values.
- Number of decimal places can be set per Y-axis.

**PDBS**

- Several corrections when inserting older data into existing data.
- Use of double instead of float (so that meter ID's can also be trended).

- Memory management improved when RAM memory is too small (for large imports of data).
- Merge function (old and new data) optimized, if data is older than 30 days.
- Preparations for PDBS to be replaced with other databases (ProMoS NG).

**PET**

- Sorting of DMS name adjusted. Sorting no longer considered upper and lower case.

**pRestore**

- No crash anymore if the ZIP file contains further ZIP files.
- The "\_BIG" in the file name was removed again (caused problems).

**ProjectCfg**

- Spaces at the beginning and end of the project name are automatically eliminated. Could cause problems.

**PrtFormat**

- An error message was displayed when selecting an "empty" format. Selection option was disabled.

**pWebAccess**

- Data type BYS and BYU are now fully supported.
- Log entries optimized.
- Crash eliminated.

### 3 Important changes and new functions

The following chapters describe the most important changes and new functions.

#### 3.1 Display licenses extended

The number of used data points is now shown in the license display:

PCD/SDRIVER	5007 / 100000
Channels	0
FTP	1
PWEB (JAVA)	0
ESPA	0 / 0
PCHART	6
SNMP	0 / 10000

#### 3.2 Extension Delimiter.cfg

To build up AKS names according to planner/builder specifications, it is possible to replace the individual separators (:) by means of the delimiter.cfg file.

Example:

```
[delimiter]
1=?
2=!
3=-
4=_
```

The output of `BN028:H04:MT:500:actualvalue` has been changed to `BN028?H04!MT-500_actualvalue`.

Individual areas can now also be completely hidden:

```
[Display]
1=No
2=Yes
3=Yes
4=Yes
5=Yes
6=Yes
```

This allows individual stages to be completely hidden (can be useful if the PLC name is to be hidden at the beginning).

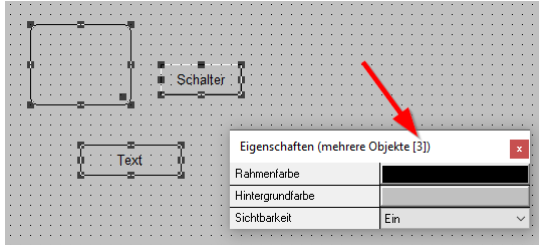
The output of `BN028:H04:MT:500:ActualValue` has been converted to `H04!MT-500_ActualValue`.



### 3.3 GE - Graphic Editor

#### 3.3.1 Display number of marked objects

When selecting multiple objects, the number of selected objects is now displayed in the attribute window title:



#### 3.3.2 Customization Copy/Paste function

When copying, the marked areas are copied 1:1. With the key combination Shift-CTRL-V (Shift-STRG-V) the GE asks whether to reinitialize (analogous to macros).

### 3.4 MalmMng - remote alarm

The HTTP requests now also support TLS 1.2 encryption.

### 3.5 pBackup / pRestore

pBackup saves the historical data (trend data) anew in a separate directory.

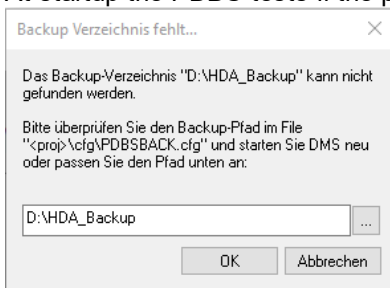
### 3.6 PDBS

The storage of historical data in PDBS has been completely rebuilt. No more historical data are stored in the project. All trend data are managed in a separate directory that can be specified (can also be a network drive).

Consequence of this is that e.g. also pBackup/pRestore had to be adapted.

#### Specification of the backup path during system update

At startup the PDBS tests if the path for the historical data is available. If not, a dialog is displayed:



If no path is specified within 30 seconds, the ProMoS start is terminated.

**Progress bar display (config file)**

It is possible to follow the progress of the conversion via a progress bar. For this purpose, the following line must be inserted in the ..\cfg\pdbus.cfg data of the project:

```
[Settings]
...
ShowReorgBar=1
...
```

By default, the progress bar is turned off so that the attachments can be started normally.

When starting the PDBS, the existing data will be automatically converted to the new format (all HDA data will be copied to the corresponding directory).

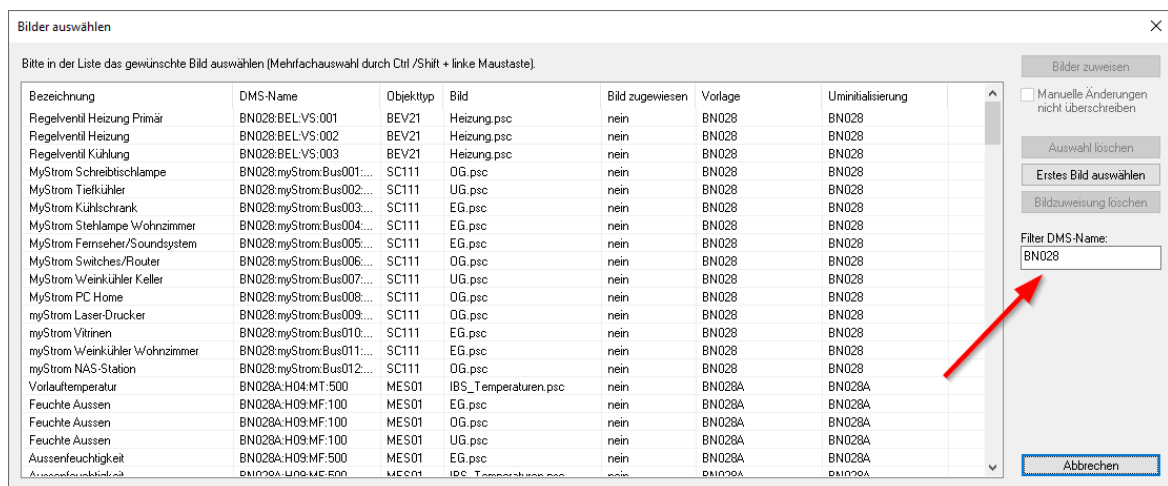
**A reconversion is NO LONGER POSSIBLE!** Possible errors must be corrected in version 2.1.110.x.

Extensive tests have not revealed any problems.

We recommend nevertheless, a complete data backup before the update.

## 3.7 PET - ProMoS Engineering Tool

### 3.7.1 Filter for alarm bill assignment



A filter can now be used when assigning the alarm images. This is useful if, for example, an additional controller is commissioned in an existing plant. This means that existing links are no longer adjusted when "Select first image" is used.

### 3.7.2 Conversion trend data acquisition

Due to the modification of the storage of historical data, the dialog for entering trend data has also been adapted.

The specification of the number of days in the DAT directory has been omitted.

Also the dialogs were adapted accordingly:

If the PCD driver is selected, it is still possible to configure the offline data storage on the PCD (was still left for compatibility reasons. Was implemented 20 years ago for data transfer via modem - is hardly used today).

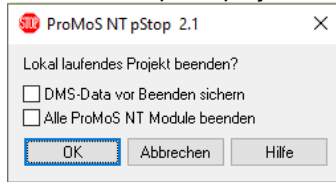
### 3.7.3 Download template objects

PET has been prepared that template objects can be downloaded directly from the Internet (as a setup).

The "Update" button is used to display the newly installed templates in the list.

## 3.8 pStop

Now the complete project can be terminated:



In older versions, pWA and FTP server remained running in order to have no interruptions in the remote displays and still be able to manipulate files. But this is not desired in every case.

## 3.9 General

### 3.9.1 DELIMITER.CFG extension

The configuration file DELIMITER.CFG (in the cfg directory) can be used for a long time to specify which DMS delimiter (:) should be replaced with which character in the output.

```
[Delimiter]
1=?
2=!
3=-
4=_
```

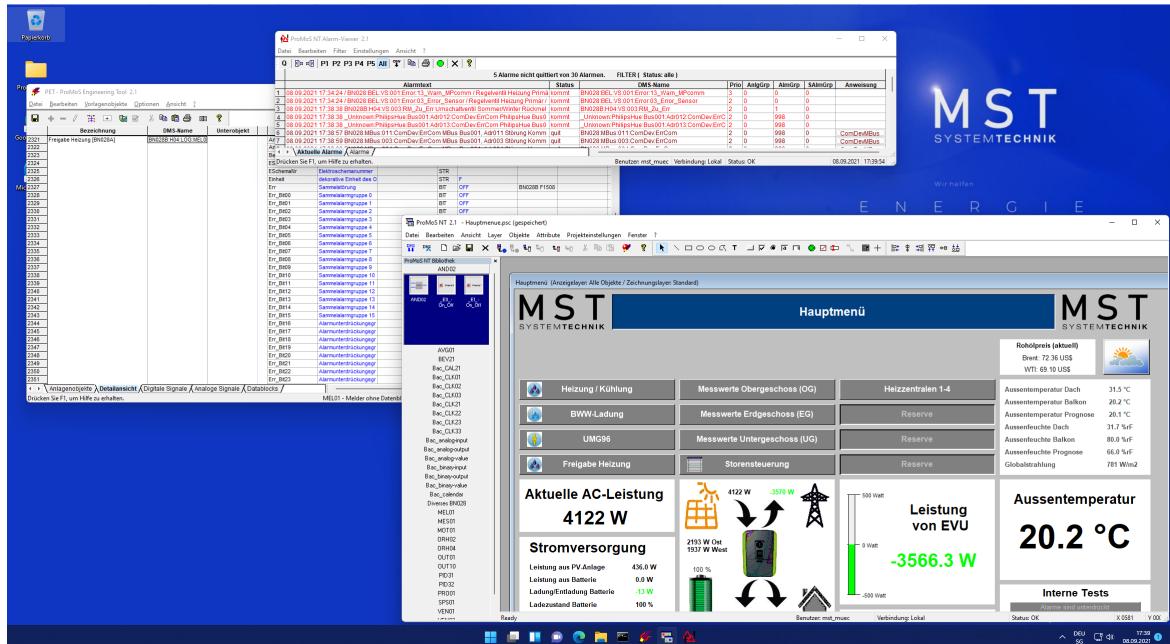
In a second area, you can now additionally define which areas of the strain gage name are to be displayed and hidden.

```
[Display]
1=No
2=Yes
3=Yes
4=Yes
5=Yes
6=Yes
```

This allows e.g. to hide the PLC name at the beginning of the output in GE, AlarmViewer and other programs.

## 4 Windows 11

Initial tests with Windows 11 show no inconsistencies.



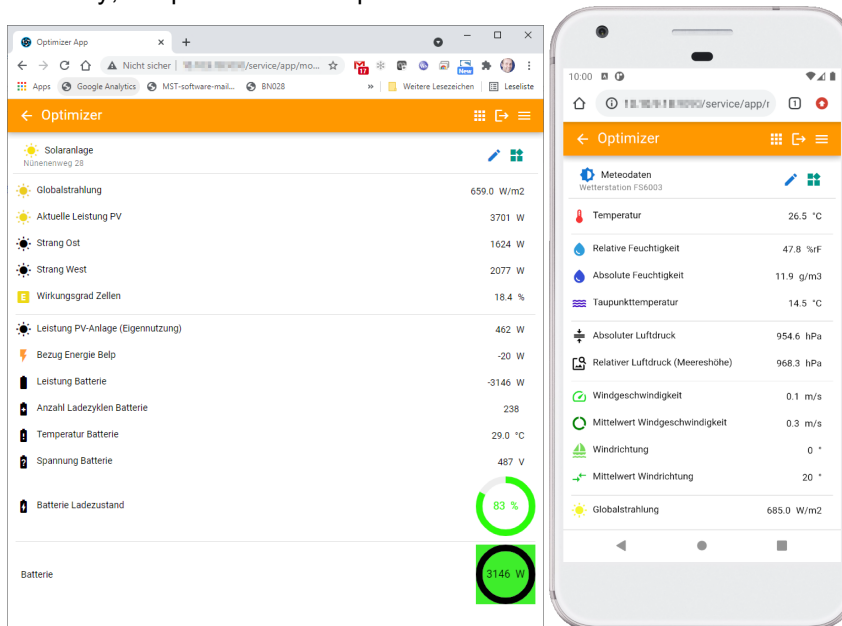
We currently assume that there will be no problems with ProMoS NT under Windows 11.

## 5 What's next for ProMoS?

ProMoS NG

News are continuously published on [promosnt.ch](https://promosnt.ch) ([promosnt.com](https://promosnt.com) in English).

Currently, the possibilities of operation on browsers and mobile devices are being expanded.



## 6 Support

Support for ProMoS NT and Visi.Plus can be requested via the following channels:

**Switzerland, Luxembourg, Belgium, France, Italy:**

Email: [support@mst.ch](mailto:support@mst.ch)

Phone: +41 31 810 15 10

**Germany, Netherlands, Austria, Scandinavia**

Email: [support@mst-solutions.de](mailto:support@mst-solutions.de)

Phone: +49 40 999 99 4210

Support 15 minutes will be charged (project specific clarifications, training by phone etc.), if it is not about ProMoS errors or improvement suggestions.

Support packages can also be purchased.

Please ask for price list and news letter via [info@mst.ch](mailto:info@mst.ch) or [info@mst-solutions.de](mailto:info@mst-solutions.de).

Current information can be found at [www.promosnt.ch](http://www.promosnt.ch).