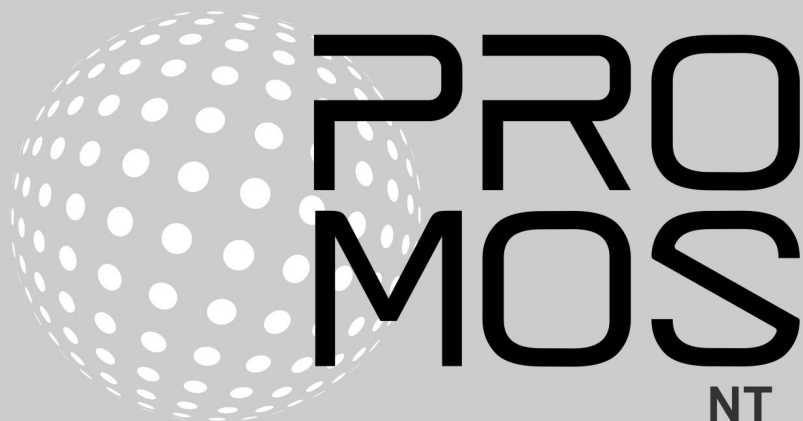


Update



Contents

1	Introduction	3
2	MST Technology Days	3
3	Corrections	3
3.1	Version 2.23.110.17	4
3.2	Version 2.23.110.18	5
3.3	Version 2.23.110.19	5
3.4	Version 2.23.110.20	6
3.5	Version 2.23.110.21	6
3.6	Version 2.23.110.22	8
4	Important changes and new functions	9
4.1	License server accessible via proxy	9
5	What's next for ProMoS?	9
5.1	Designer	10
5.2	Current status	12
5.3	BETA version	13
6	Support	13

1 Introduction

The versions 2.23.110.17 to 2.23.110.22 contain mainly corrections and small improvements (service pack).

2 MST Technology Days

The ProMoS Day and the Portal Day will be replaced by the MST Technology Days.



On Thursday, September 7, 2023, the focus will be on new technologies and engineering methods.

- New driver architecture
- Debug capabilities
- New template objects in Structured Text (Wago, Beckhoff, Saia Qronox, Codesys ...)
- Code generator for Structured Text
- PLC programming using Codesys directly in the cloud
- Current status of ProMoS NG development (designers, templates, operating screens)
- Programming NG by means of JavaScript
- Workshop ProMoS NG
- Cyber-Security

On Friday, September 8, 2023, many interesting EDL portal topics are again on the agenda.

3 Corrections

This chapter lists individual corrections and improvements.

In the last versions, the first modules of ProMoS NG have already been introduced. Corrections in these modules are also listed here.

Versions are also listed that were never released because, for example, errors were found during internal tests. Currently, several thousand tests are performed, most of them automated. For example, at least 500'000'000 value changes, as well as more than 10 million alarms and logs are automatically generated within 4 -5 days to guarantee stability.

If only one test fails, the version is not released to customers.

3.1 Version 2.23.110.17

Version from 15.02.2023

BACConfig / BACDriver

- DMS root path can now be defined per device
- Scan/Import of BACnet objects not defined as VLO optimized
- AKS mapping improved (BacToDMSKeyMask)
- the content of the Description-Property is now also taken over like with the BACdriver
- variable System:UnitsFile is created automatically

DMS

- not only EXE-files but also .LNK-files can be started now

GE

- Correction for YAML language file read function
- Icons with an extension of 0 are no longer saved

KNXDriver

- Problem when starting very large projects fixed
- Extension by data type DTP

MalmMng

- Logs optimized
- Alarm groups are now also registered (analog AlmMng)

MBusDriver

- New meter support: EMU, SOC (V2), ZRI

ModbusDriver

- Problems with communication of coils solved
- Swapping optimized, default values adapted
- MB_DIFF is newly considered
- New DataView implemented
- Problems with negative values corrected

MQTTDriver

- Watchdog implemented

pBackup

- Handling of open log files improved (NG)

pChart

- Transfer of description when re-reading trend data points improved

PET

- automatic filling of data types (Modbus) corrected

ProjekctCfg

- the new ModbusDriver can now be selected

pWA

- correction for re-initializations
- correction initialization position switch
- call of weblinks corrected

3.2 Version 2.23.110.18

Version from 21.02.2023

DMS

- incorrect display of remaining time when unplugging the dongle corrected

GE

- correction error message at trend object (update at DMS continuous)

pWA

- Problems with opening alarm viewer (via EDL portal)
- Problems with login fixed (in connection with EDL portal)

3.3 Version 2.23.110.19

Version from 15.03.2023

Asciiexport

- The license queries were removed completely

BACDriver

- Correction in display of object contents

DMS

- Adjustments hard- and softdongle
- DLY function optimized (read path with time value)

GE2XML

- Problems, if two SetValue switches are on top of each other, fixed

KNXDriver

- Order of KNX templates fixed

MBusDriver

- New counter type: LUG

ModbusDriver

- new PET file for the driver - new data types can be selected
- possibility to activate a debug mode, during which no data is written to the DMS

3.4 Version 2.23.110.20

Version from 07.04.2023

BACConfig

- existing entries in the mapping file are no longer overwritten

DMS

- correction when starting .Ink files
- rare crash fixed (Ciritcal Sections)
- saving via "System:NT:Save" fixed

GE

- Correction when processing regular expressions

KNXDriver

- Saving of the configuration optimized
- Crashes fixed
- Configuration was lost on 2nd import Fixed

MBusDriver

- Optimization MBus records processing (if counter sends faulty data)
- Extension configuration for ABB, SBC
- New counters: EQU, KAM

mDriver

- Correction for telegram index (if higher than intended)

ModbusDriver

- new register types
- Logs revised

PET

- increase of PET files line lengths (for ModbusDriver)
- correction path search for PET files

3.5 Version 2.23.110.21

Version from 08.06.2023

AlmMng

- Crash fixed (out of range / missing trayicon)

Almview

- maintenance can be exported as CSV now
- multiple alarm priorities can be passed as start parameters

BACDriver

- language dependent BMO/VLO and object filters added to setup

DMS

- Monitoring of the ModbusDriver implemented
- Correction of license file

- Crash fixed

GE

- Interpretation of time information corrected (was partly interpreted as DMS names)
- Problem when renaming SVG icons fixed
- fixed crash when switching GE from runtime to edit mode if property window is open
- the last filter setting during object selection remains (does not have to be re-entered every time)

GE2XML

- float constants are generated correctly (for pWA)

KNXDriver

- crash at startup (null pointer) fixed
- additional import deleted existing group addresses
- Dataview monitor was implemented

Logger

- now up to 9999 data points can be exported (instead of 999)

MalmCfg

- the baud rate can now be entered for the SMS gateway
- Alarm groups are processed analog to AlmMng
- Processing of special characters (äöü etc.) adjustable

MBusDriver

- license monitors number of devices (and no longer number of records)
- new configuration for EMH (V2)

mDriver

- configuration is written at startup (for transfer in ModbsuDriver)

pBackup

- the backup path is saved permanently and is available at the next start again
- tmp-Files are not backed up anymore

pChart

- export works even if no data is available at start time
- summer/winter time is taken into account during export

PDBS

- Directory management historical data optimized (if deleted manually)
- Filter for multiple alarm priorities added (see AlmView)

PET

- Multiple display of data points corrected (ModbusDriver)
- Crash fixed

pList

- Filter BMO corrected

pWA

- alignment texts improved (DDC suite)
- multiple alarm priorities when calling AlarmViewer as parameter

SNMPDriver

- new internal buffers (for working with SNMP concentrators)

3.6 **Version 2.23.110.22**

Version from 13.06.2023

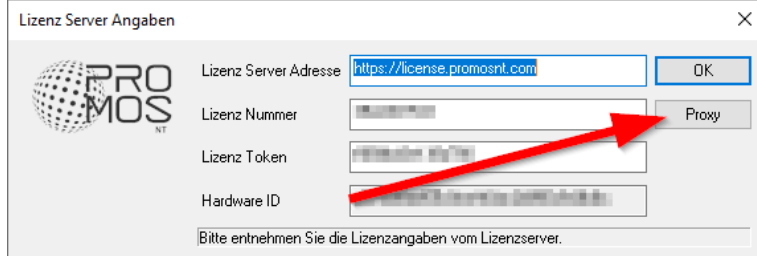
DMS

- Problem with automatic restart (watchdog) fixed

4 Important changes and new functions

4.1 License server accessible via proxy

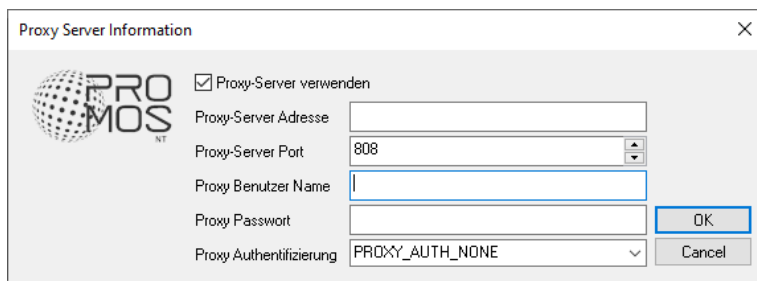
A proxy server can now be defined when entering the license data:



The screenshot shows the 'Lizenz Server Angaben' dialog box. It contains the following fields and buttons:

- Lizenz Server Adresse: OK
- Lizenz Nummer:
- Lizenz Token:
- Hardware ID:
- Proxy:

A red arrow points from the 'Proxy' button to the 'Hardware ID' field. At the bottom, there is a note: 'Bitte entnehmen Sie die Lizenzangaben vom Lizenzserver.'



The screenshot shows the 'Proxy Server Information' dialog box. It contains the following fields and buttons:

- Proxy-Server verwenden
- Proxy-Server Adresse:
- Proxy-Server Port:
- Proxy Benutzer Name:
- Proxy Passwort:
- Proxy Authentifizierung:
- OK
- Cancel

The following authentication methods are available:

- PROXY_AUTH_NONE
- PROXY_AUTH_HTTP_BASIC
- PROXY_AUTH_HTTP_DIGEST
- PROXY_AUTH_NTLM

5 What's next for ProMoS?

ProMoS NG is taking more and more shape. More and more projects are going live (MST customers only).

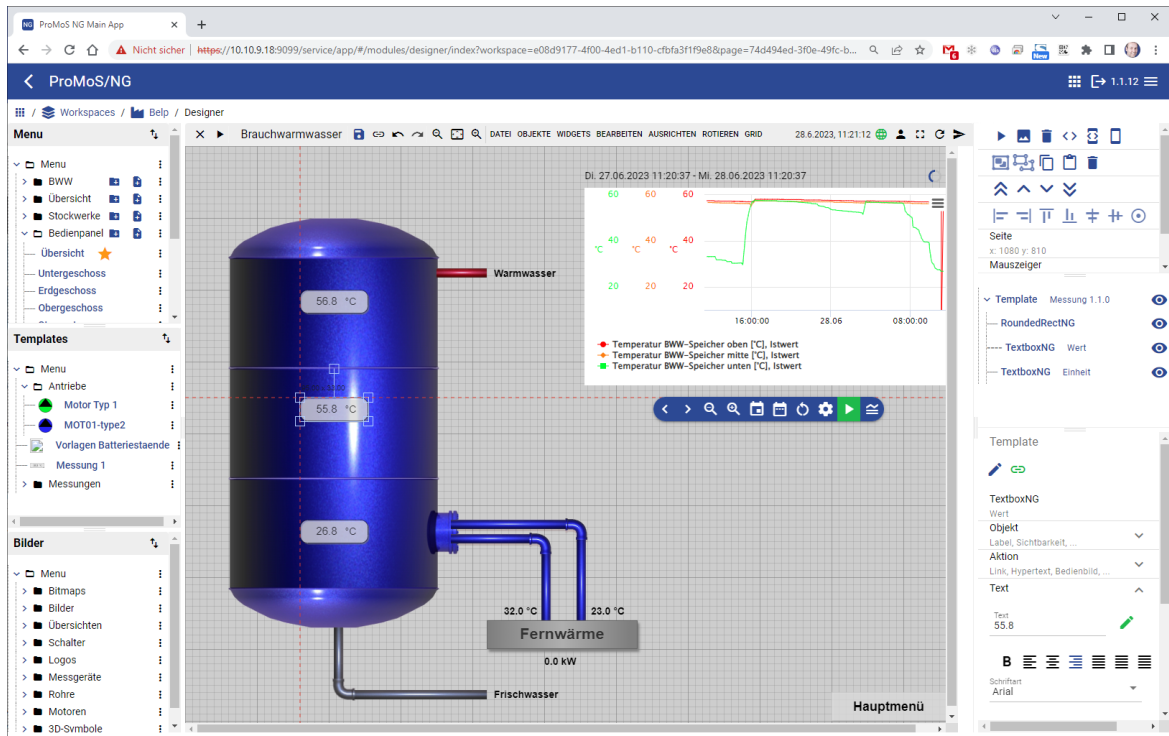
Projects with ProMoS NG under Linux and OpenWRT are also already in operation.

Currently we are creating the graphical templates for the Structured Text objects (for NT they already exist). These are completely independent of the PLC type (Codesys, Beckhoff, Wago, Weidmüller, Qronox and Logicals).

ProMoS NG will be optimized for working with code generators (TopDown). But we will also optimize the interaction with the web variant of Codesys (this should be available from 2024).

Due to the goal of being as independent as possible from the PLC used, we are forced to standardize the engineering approach. Thus, we are already running the first tests that also generate logic in the PLC (in collaboration with Codesys). Don't panic: Conventional work in a hybrid mode is also possible without any problems (analogous to SAIA's DDC suite). We are just looking for ways to further improve the workflow.

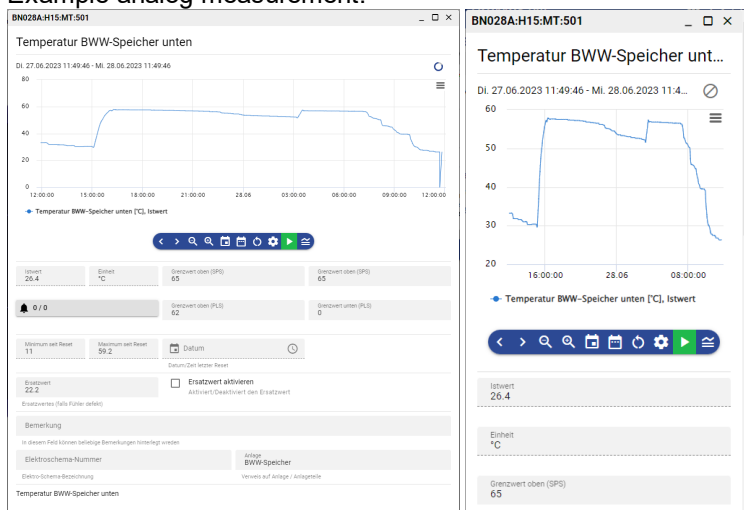
5.1 Designer



Templates are much easier to create/manage than in NT (without BMO tree in DMS). Adjustments can be made in any object and are automatically adjusted on all images after saving.

The detail images are no longer labeled in the editor like a normal image, but only configured. The size and the display automatically adapts to the output device (e.g. cell phone)

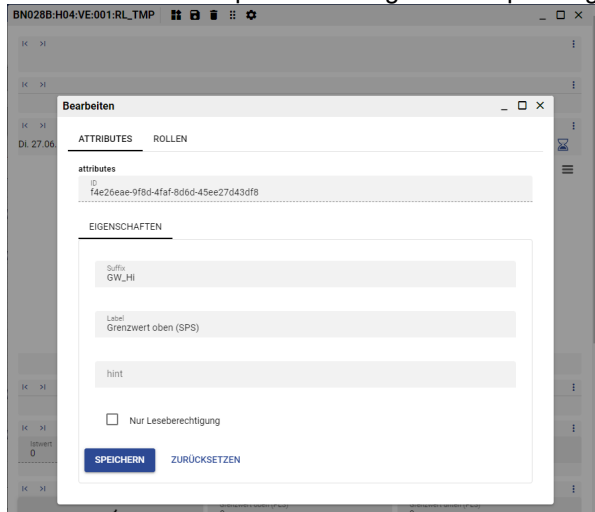
Example analog measurement:



Different widgets are available for the operating images:

- ✓ Label
- ✓ Markdown
- ✓ Placeholder
- ✓ Separator
- ✓ alarm
- ✓ alarmlist
- ✓ log
- ✓ changeloglist
- ✓ chart
- ✓ chartButton
- ✓ checkbox
- ✓ date
- ✓ Number
- ✓ Select
- ✓ Text
- ✓ Time

This is used to compose the image in the operating screen editor:



Window sizes are now only relative (e.g. small, medium, large) and automatically adjust to the screen sizes.

We are also already thinking about how existing DDC Suite projects can be implemented with the new operating screens.

Also a versioning of the templates (new Templates) was introduced, so that in a project also several template versions e.g. of an engine can be used.

We are currently also working on a converter that automatically transfers the images from NT into the new NG format. The goal is to transfer existing projects automatically. But we had to realize that various possibilities under NT do not really make sense under NG. We are working on it...

The initialization possibilities in the new Designer (successor of GE) are almost endless. We have only taken over a (sensible) part into the user interface.

5.2 Current status

Current state of development of ProMoS NG (completely web-based):

Modul	Status	Release (planned)	Comments
Hauptmodule			
DMS			
PDBS (-Replacement)			Is part of the new DMS
AlmMng			Is part of the new DMS
PrtMng			Is part of the new DMS
HdaMng			Is part of the new DMS
Designer (GE)		Q1 2024	Available for initial testing
pWA			Not applicable
Treiber			
ModbusDriver			
M-BusDriver			
BACnetDriver		Q3 2024	Completely new development, basic driver is developed
OPC UA Driver		Q1 2024	Available for first tests
KNXDriver			
MQTTDriver			
PCDDriver			
SDriver*			Will not be ported. Replacement: PCDDriver
OPC DA Driver*			It is still open whether it will be ported at all
mDriver			Not prototyped (Replacement: ModbusDriver)
IEC870-5-104Driver			
ESPADriver			
MailDriver			
Tw inCatADSDriver			
Manager			
ClkMng		still open	Regular start of programs is implemented in process manager
Logger*		still open	
MalmMng*			For remote alarming the alarms can be sent to the alarm portal
pFTP			
Tools			
pChart		Q4 2024	Complete replacement as browser app
PET		Q2 2024	
Codegeneratoren Structured Text		Q2 2024	Test versions from Q1/24
oList*		Q3 2024	It remains to be seen whether the tools are still to be used in this way or implemented directly in the PET replacement
pList*		Q3 2024	It remains to be seen whether the tools will still be used as they are or whether they will be implemented directly in the PET replacement.
parList*		Q3 2024	It remains to be seen whether the tools will still be used as they are or whether they will be implemented directly in the PET replacement.
pCalc*		open	How the tool will be adopted is still unclear. Many things can now be calculated directly in the DMS.
HDAOptimizer			is implemented directly in the DMS. Evaluation still open.
pmosFilePicker*			

Modul	Status	Release (planned)	Comments
prtFormat*		Q3 2024	
pUser		Q1 2024	Users can currently already be managed. SingleSignOn, e.g. in Windows environments, OAuth are open.
SetDMSVal			Not applicable (DMS can be started in parallel in umpteen web instances to change data in DMS).
AsciiExport			Will be integrated directly into DMS
pAlmText		Still open	
pBackup*			Here a completely new mechanism will have to be built (e.g. Gitlab). pBackup/pRestore can be used though.
pRestore*			

* the existing NT modules can still be used, but only under Windows.

5.3 BETA version

We expect to give a beta version to MST Technology Days attendees for "testing" on September 7, 2023 (Windows version only).

6 Support

Support for ProMoS NT and Visi.Plus can be requested via the following channels:

Switzerland, Luxembourg, Belgium, France, Italy:

Email: support@mst.ch

Phone: +41 31 810 15 10

Germany, Netherlands, Austria, Scandinavia

Email: support@mst-solutions.de

Phone: +49 40 999 99 4210

Support > 15 minutes will be charged (project specific clarifications, training by phone etc.), if it is not about ProMoS bugs or improvement suggestions.

Support packages can also be purchased (from 25 hours).

Current prices can be requested at <https://license.promosnt.com/>.

Current information and registration for the newsletter can be found at www.promosnt.ch or promosnt.com (English).